



Newsletter



October 2021



On the 2nd of October, in spite of the appalling weather and a shortage of fuel, with trays full of buttons and Dianne's carefully crafted examples to inspire, members' designs slowly emerged. They used buttons, material and thread to create their many and varied designs. Thank you Dianne for all the time and creative effort you put into preparing your sessions for Brighton Embroidery Group. It is much appreciated, everyone looks forward to your sessions, they are always amazing.



The above are all work in progress but if you have any finished pieces of work from the Mackintosh design, (from the garden party), Nature Inspired Vases (Ann Sillifant) or Buttons and Embroidery, please email them to me so that they can be used to update our website. The website is slowly bringing in new members but it does need to be kept up to date. begwebmaster@btinternet.com If you are unable to take photos and email your finished work to me, please bring it to our next session and I will take photographs. All photos need to be high resolution, for the website. Thank you.

Have you checked out our website recently? It has many items on there, including the 2021 programme and soon our well planned 2022 Programme. brightonembroidery.org

CATHERINE LAWES Layered Landscapes

Workshop November 6th 2021.10am to 4pm at Patcham Community Centre. Rooms 3 & 4

.In this class you will create an atmospheric, impressionistic landscape using many different fabrics other than cottons. This will include silks, velvets, linens, polyesters, viscose, furnishing fabric & recycled fabrics from garments. Packs of mixed fabric will be for sale, but you're welcome to bring your own..

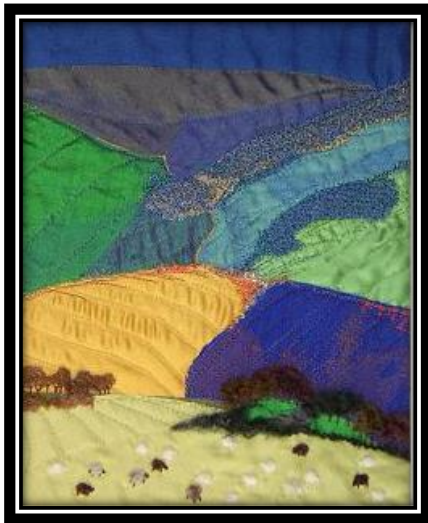
Equipment

Hand stitching needles - especially embroidery / Scissors Sewing machine for free machining (optional) / Free machining foot / Machine needles, pedal, manual.

Photo for inspiration,- A3 calico, A3 cotton/blend wadding, Selection of fabrics – textured, furnishing, chiffons, sheers, polyesters, silks, almost anything other than cotton.
Sewing/embroidery threads to match.

Stitching can be done by hand or machine, or a combination of both.

Examples by Catherine Lawes



High Fell



Scintillating Landscapes

For this workshop there will be a charge of £15.00 for BEG members (£20.00 for others)

Please let me know if you will be attending, begwebmaster@btinternet.com. I hope to be there. I am offering places to other Stitch Together (S.E) groups but BEG members will have priority.

Payment can be made at the door, cash or cheque, but bank transfer is preferred. (reduces bank charges.)

Please email for bank transfer account details : begwebmaster@btinternet.com

Please bring your own lunch, as usual tea and biscuits will be provided.

BEG members are very welcome to attend in the afternoon from 2.00 to 4 pm and view work in progress but please bring your own stitching, A table will be set aside for you. We are using Rooms 3 and 4.The usual charge of £5.00 will apply.